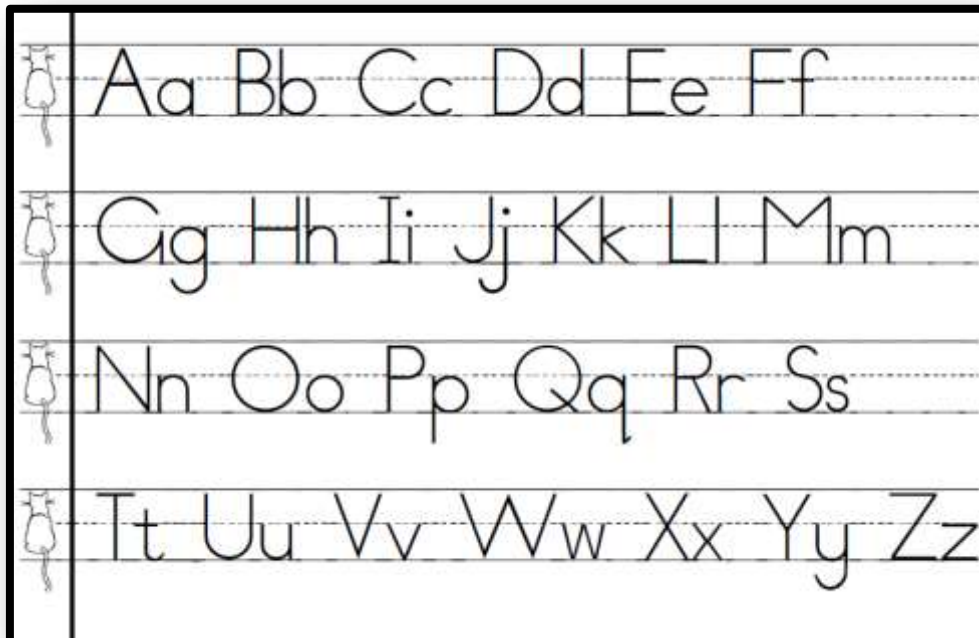


## Print Handwriting Charts



Welcome to teaching handwriting with laminated charts!

- Begin by printing & **laminating** each chart.
- Use **white board markers** to write over each letter.
- **Start** with the chart with **arrows** and the cat in the margin so that the child can see where the letter is positioned and where to start and how to form each letter.
- Most letters start in the “**body**” line. Tall letters start at the top “**head**” line and some letters hang through the body line with “**tails**”.

You will find all the lined handwriting pages, practice charts, step-by-step instructions, more tips and ideas on my blog <http://practicalpages.wordpress.com>.

Blessings,

*Nadene*

A handwriting practice chart for lowercase letters. It features four vertical columns, each containing a set of three horizontal lines (top, middle dashed, bottom) and a small illustration of a cat at the top. The letters are arranged in four columns from left to right:

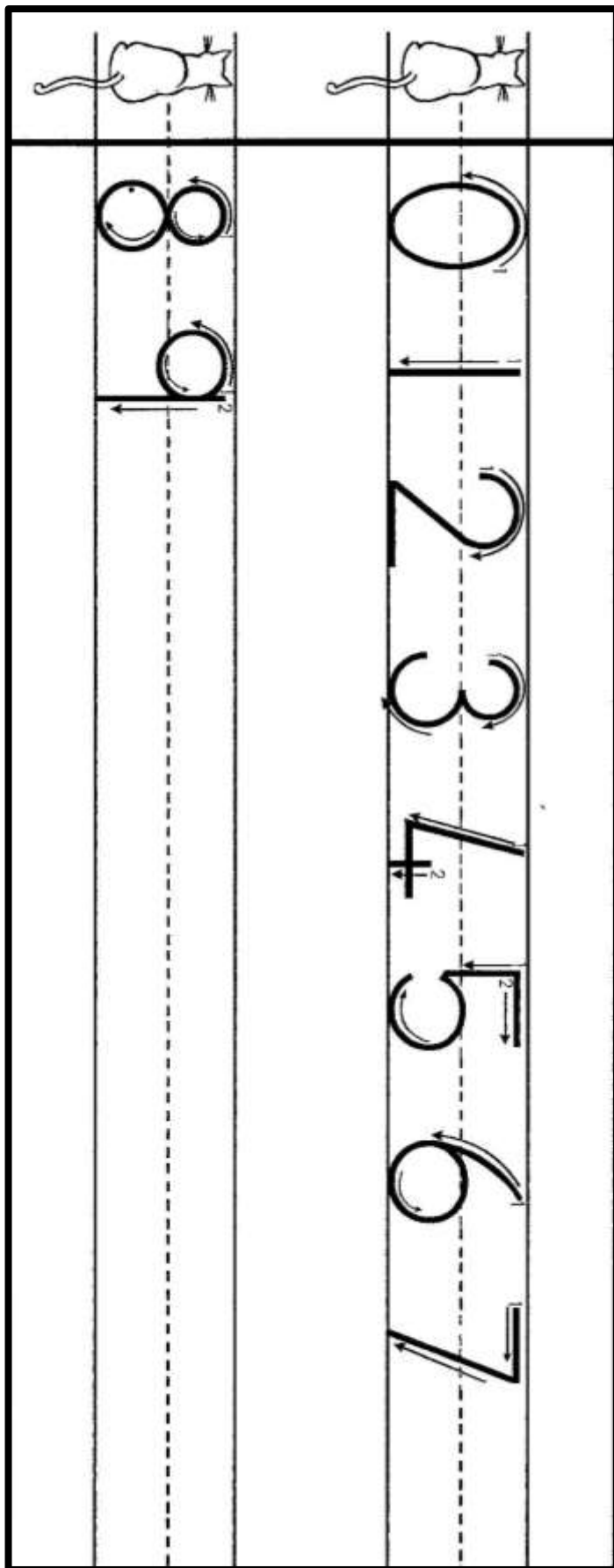
- Column 1: x, h, z
- Column 2: d, b, r, s, t, u, v, w
- Column 3: h, j, k, l, m, n, o
- Column 4: a, b, c, d, e, f, g

Each letter is shown with numbered arrows indicating the correct stroke order and direction for writing.

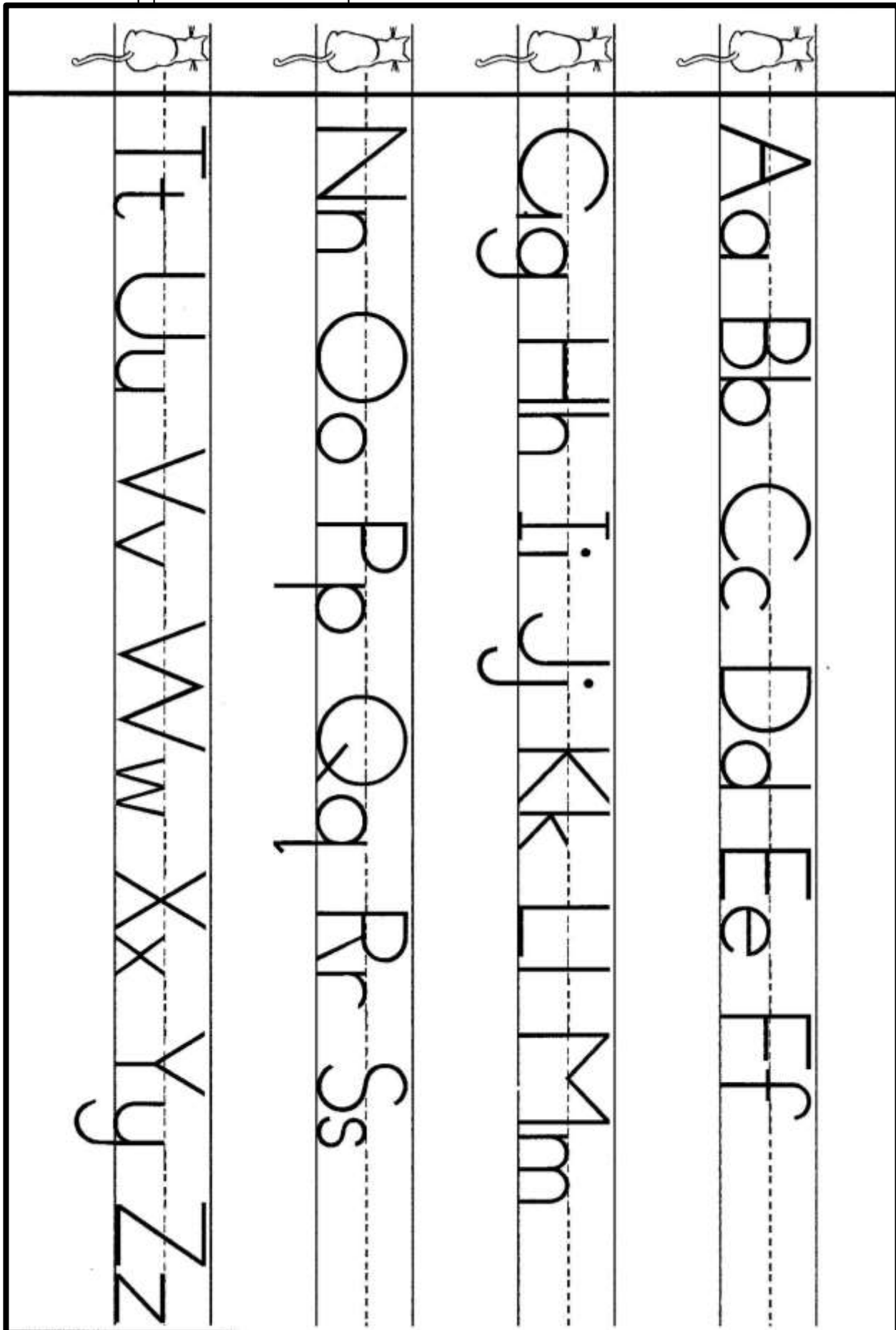
A handwriting practice chart for uppercase letters. The chart is organized into four vertical columns, each containing a set of three horizontal lines (top, middle dashed, bottom) and a small illustration of a cat at the top. The letters are arranged as follows:

- Column 1: W, X, Y, Z
- Column 2: O, P, Q, R, S, T, U, V
- Column 3: H, I, J, K, L, M, N
- Column 4: A, B, C, D, E, F, G

Each letter is shown with numbered arrows indicating the correct stroke order and direction for writing. The letters are placed between the top and bottom lines, with the middle dashed line serving as a guide for height.



Combined upper & lower case print letters with cat



A handwriting practice chart consisting of four vertical columns. Each column is bounded by a solid top line, a dashed middle line, and a solid bottom line. At the top of each column is a small illustration of a cat's back and tail. The letters in each column are arranged as follows:

- Column 1: Aa Bb Cc Dd Ee Ff
- Column 2: Gg Hh Ii Jj Kk Ll Mm
- Column 3: Nn Oo Pp Qq Rr Ss
- Column 4: Tt Uu Vv Ww Xx Yy Zz

