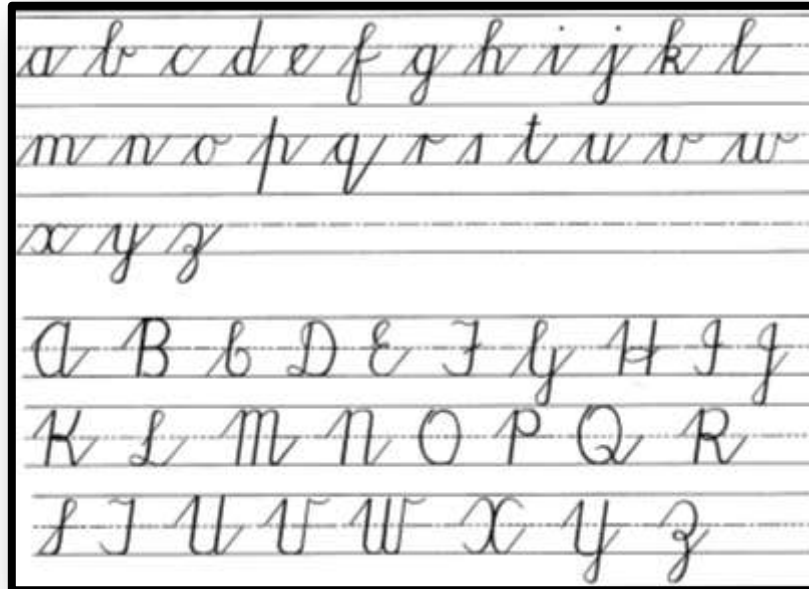


Cursive Handwriting Charts



Welcome to teaching handwriting with laminated charts!

- Begin by printing & **laminating** each chart.
- Use **white board markers** to write over each letter.
- All lower case cursive letters **start** with a joining line which begins on the "body" line.
- Almost all cursive letters flow without lifting the pen off the page (except to dot an i or j or cross the t)
- Almost all the upper case cursive letters start on the "head" line and all capital cursive letters sit on the "body" line.
- All letters lean over at the same angle; all down strokes are almost vertical and all linking strokes lean to the right.

You will find all the lined handwriting pages, practice charts, step-by-step instructions, more tips and ideas on my blog <http://practicalpages.wordpress.com>.

Blessings,

Nadene

